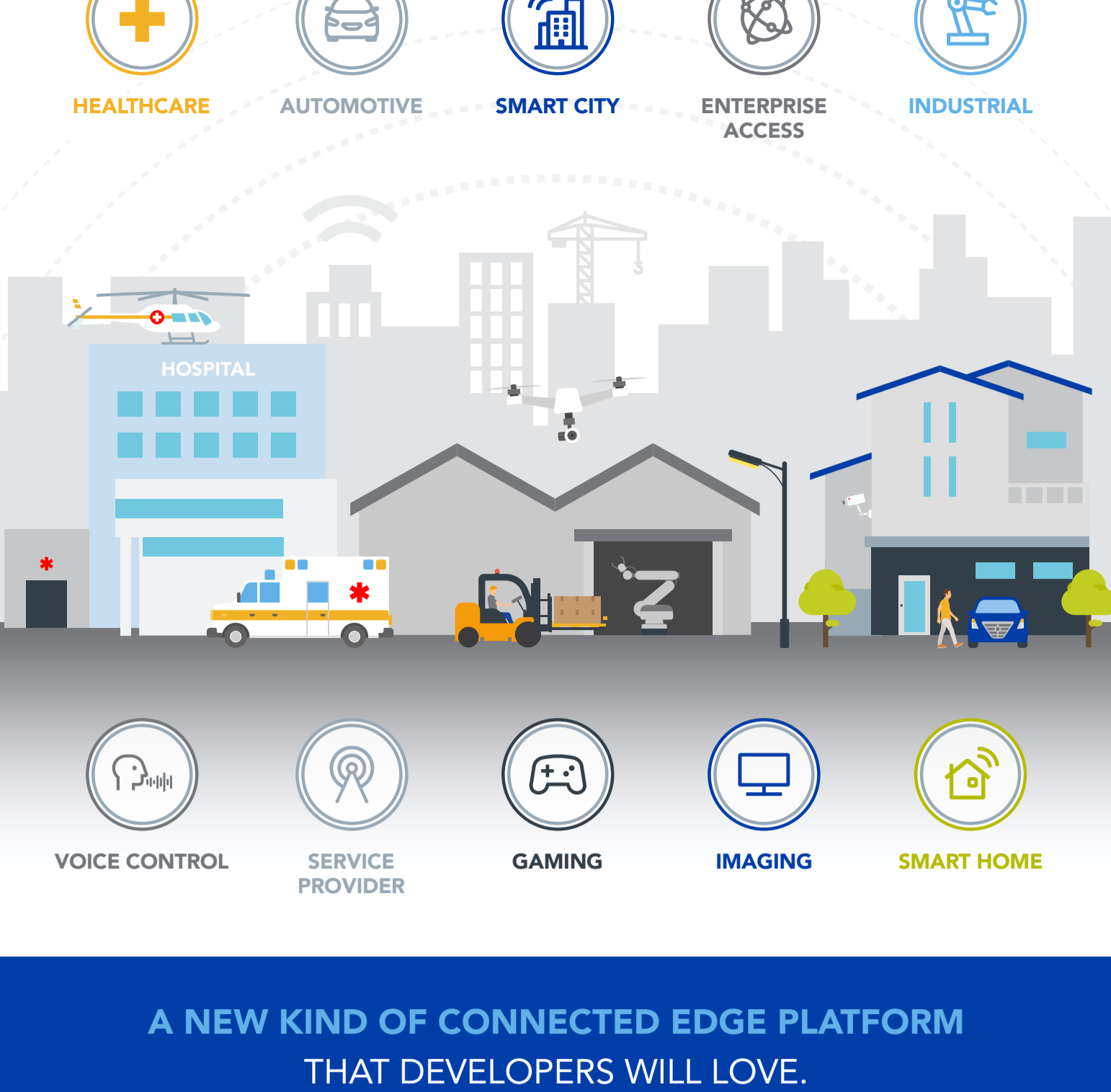


DEVELOPING WI-FI SOLUTIONS JUST GOT EASIER. AND FASTER.

Because delivering connected devices shouldn't be complex. No matter what device you're working on, or what market you're in.

Let's simplify **Intelligence with Wi-Fi and Bluetooth.**



A NEW KIND OF CONNECTED EDGE PLATFORM THAT DEVELOPERS WILL LOVE.

But integrating processing and wireless devices hasn't always been easy. For too long now, developing solutions with **MCUs** and **WI-FI** has proven to be a challenging.

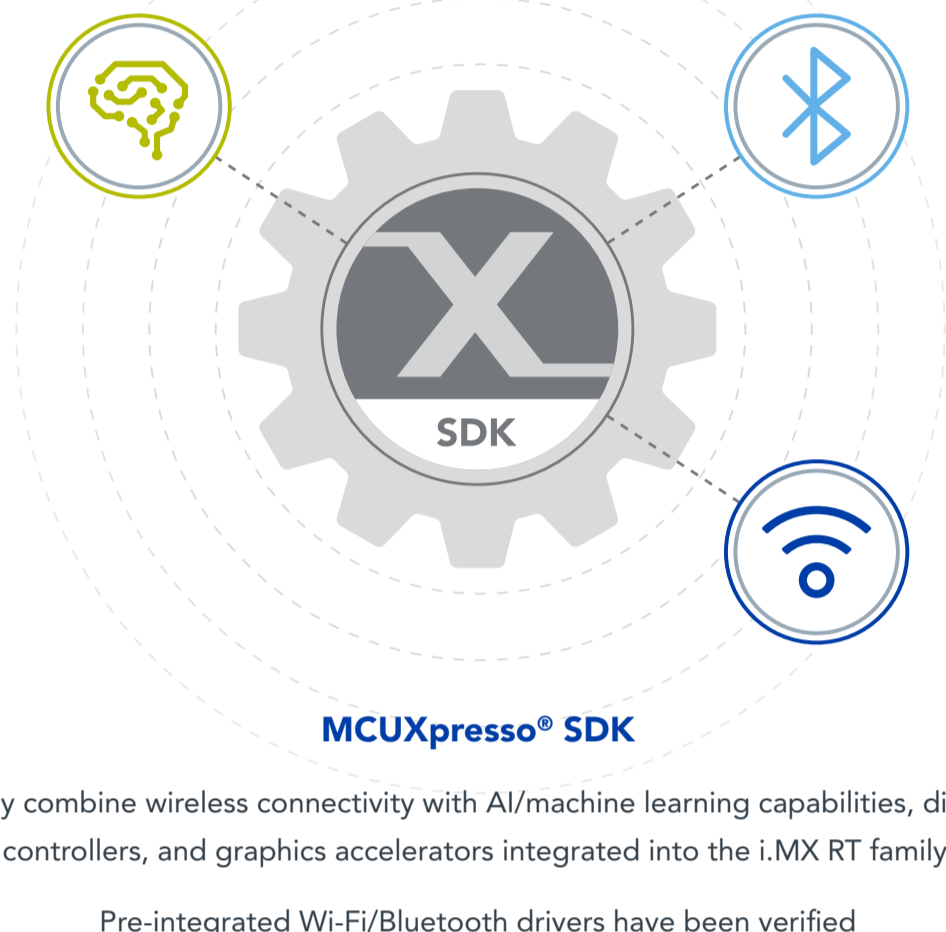
Different ICs. Different suppliers.



NXP CHANGES THAT.

By delivering new levels of scalability and usability for your connected design.

Flexible hardware, software and tool options for your Internet of Things applications.



Easily combine wireless connectivity with AI/machine learning capabilities, display controllers, and graphics accelerators integrated into the i.MX RT family.

Pre-integrated Wi-Fi/Bluetooth drivers have been verified and tested to deliver several useful examples:

- Command Line Interface (CLI) to set Wi-Fi parameters and network properties and experiment with various Wi-Fi settings/parameters
- Use case development for IoT, industrial, automotive and communication infrastructure applications
- Amazon Web Services (AWS) to use as a framework for IoT products as well as device, gateway, phone and cloud connection examples
- iPerf utility to test device-to-device performance
- Wi-Fi Direct to scan and connect mobile devices to networks

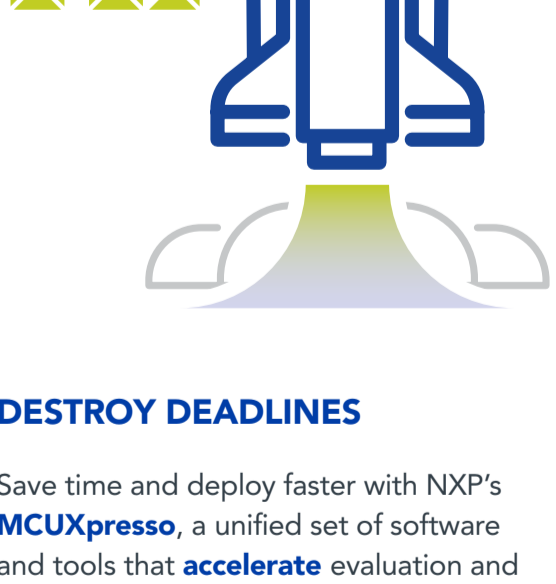
ONE TECHNOLOGY SUPPLIER ONE SOLUTION FOR PROCESSING AND CONNECTIVITY LESS WORK. LESS TIME.



OPTIMIZE PERFORMANCE

Tailored solutions for **target markets** let you deliver compelling features in **record time**.

Internet of Things



DESTROY DEADLINES
Save time and deploy faster with NXP's **MCUXpresso**, a unified set of software and tools that **accelerate** evaluation and **simplify** project development.



WORK WITH THE BEST
Choosing NXP gives you direct access to our **industry-leading ecosystem** of strategic partnerships, so you can select from the latest **innovations** and highest-quality options.



WIRELESS FLEXIBILITY TO ADDRESS ALL LEVELS OF FUNCTIONALITY AND COMPLEXITY

1x1, 2x2, 4x4, CDW (Dual MAC):
Wi-Fi 4, Wi-Fi5, Wi-Fi6/6E and
Integrated MCU+Wi-Fi/BT solutions

WHY DEVELOPERS CHOOSE NXP



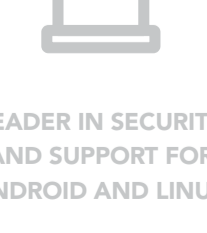
PROVEN PLATFORM WITH ADVANCED FUNCTIONALITY



TRUSTED SUPPLIER WITH ESTABLISHED ECOSYSTEM



QUALITY, RELIABILITY, AND FLEXIBILITY FOR MANY MARKETS



LEADER IN SECURITY AND SUPPORT FOR ANDROID AND LINUX

GLOBAL DISTRIBUTION NETWORK

World wide system of module partners make it easy for developers to complete the platform and obtain certifications.



To find your new module visit nxp.com/wifiblueetooth

NXP and the NXP logo are trademarks of NXP B.V. All other product or service names are the property of their respective owners. © 2020 NXP B.V.

